
Coming
up...

Research Assignment Step #3
(October 18th)

Research Assignment Step #2
returned on Moodle

Short Essay Version #1 due
October 25th

Understanding the First Plague Pandemic

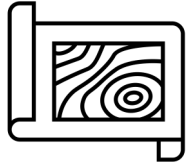
Evidence

- Geographically wide
- High mortality rates in some cases
- Originated in Central Asia
- Linked to climate change (535-550: Cooling)

Remaining Questions

- Overall mortality rates?
- Central Asia -> Mediterranean: how?
- Relationship between cooling and plague?

Characteristics of Empires



Much larger territories



Armies with variety of weapons and manpower

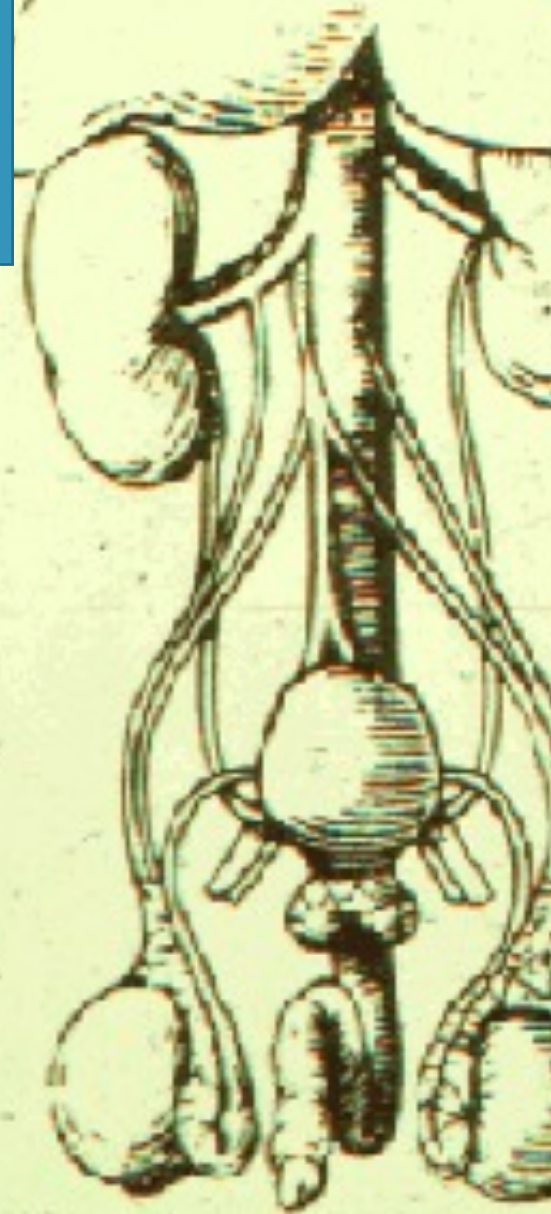
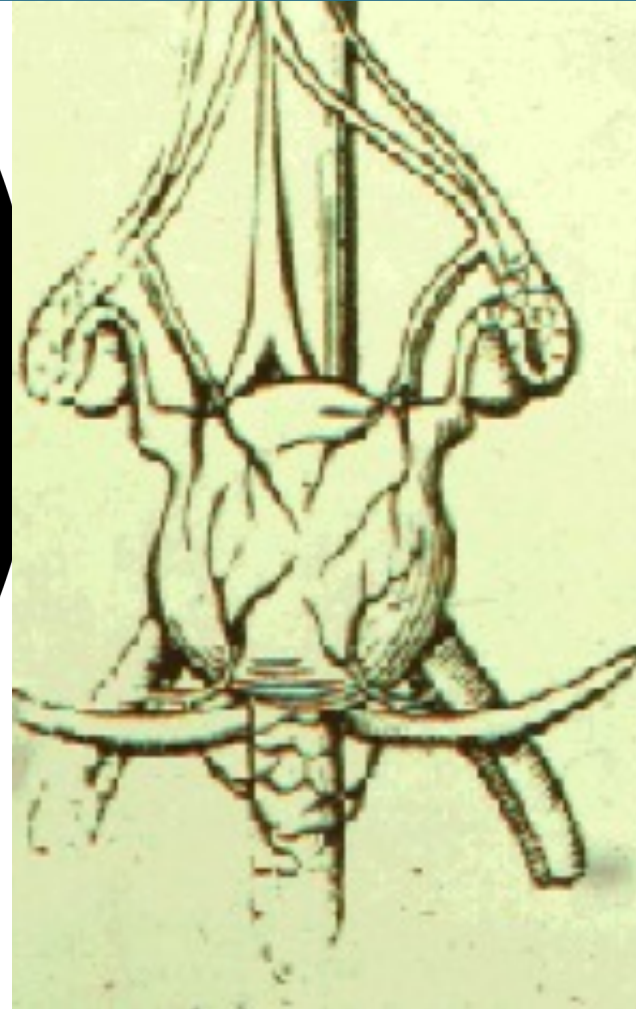


Centrally controlled administration



Cultural management

Women and Gender in the Ancient World



Defining Gender

Biological Sex = male, female, or variation

Gender = masculine, feminine, or gender diverse



Qualities/Ideas associated with being male, female, or intersex in a given society.

PATRIARCHY



WHAT?

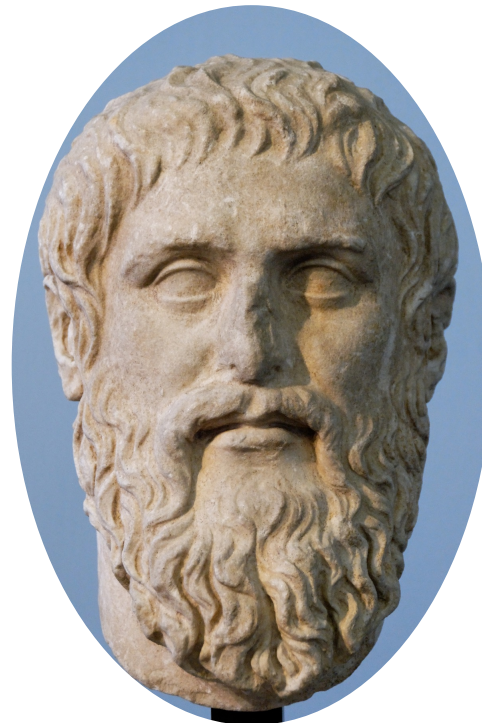
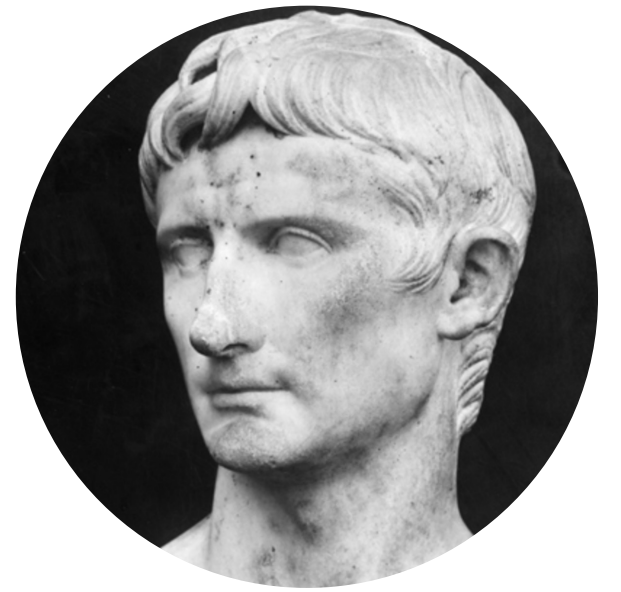
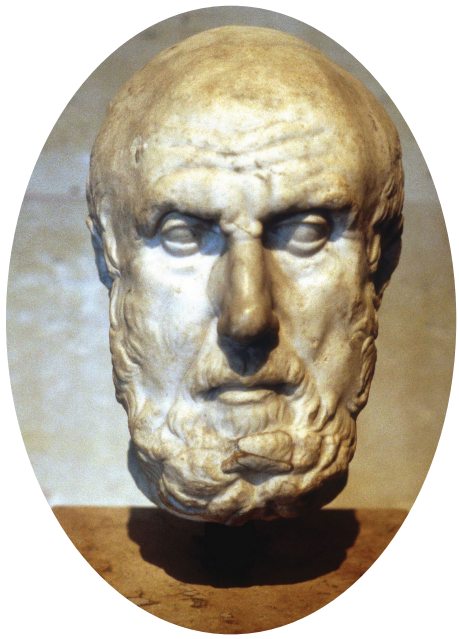
Power and authority held by a small group of men



WHO?

Elite men (wealth, political or religious authority)

Patriarchy





Confucius,
551-479 B.C.E.



Plato, 428-348 B.C.E./
Aristotle 384-322 B.C.E.

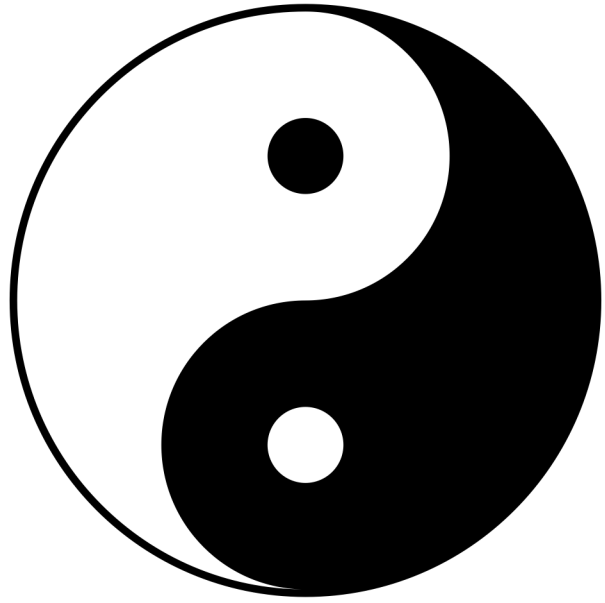


YANG

Superior
Masculine
Connected
to Heaven,
Rulers,
Strength,
Rationality,
Light

YIN

Feminine
Inferior
Earth
Subjects
Weakness
Emotion
Darkness



BALANCE

But hierarchical...

Father

Older Brother

Husband

Son

Younger Brother

Wife

“the relationship btw superiors and inferiors is like that between the wind and the grass. The grass must bend when the wind blows across it.”



Confucius

“Why is it that according to the rites the man takes his wife, whereas the woman leaves her house (to join her husband’s family)? It is because the *yin* is lowly, and should not have the initiative; it proceeds to the *yang* in order to be completed.”



Confucius

Ban Zhao, 49-120 C.E.

“unsophisticated,
unenlightened, and
by nature
unintelligent”

曹大家班惠班志

惠班名昭一名姬博學高才適曹世叔兄固著漢書
未及竟而卒和帝詔昭踵而成之數召入宮令皇后
諸貴人師事焉號曰大家





Aristotle

Men = Active Force

- form, intellect, spirit

Women = Passive Receptacle

- Matter that is formed by men

Gender Binaries



Male

Normal

Perfect

Hot

Strong

Superior

Able

Female

Abnormal

Monstrous

Cold

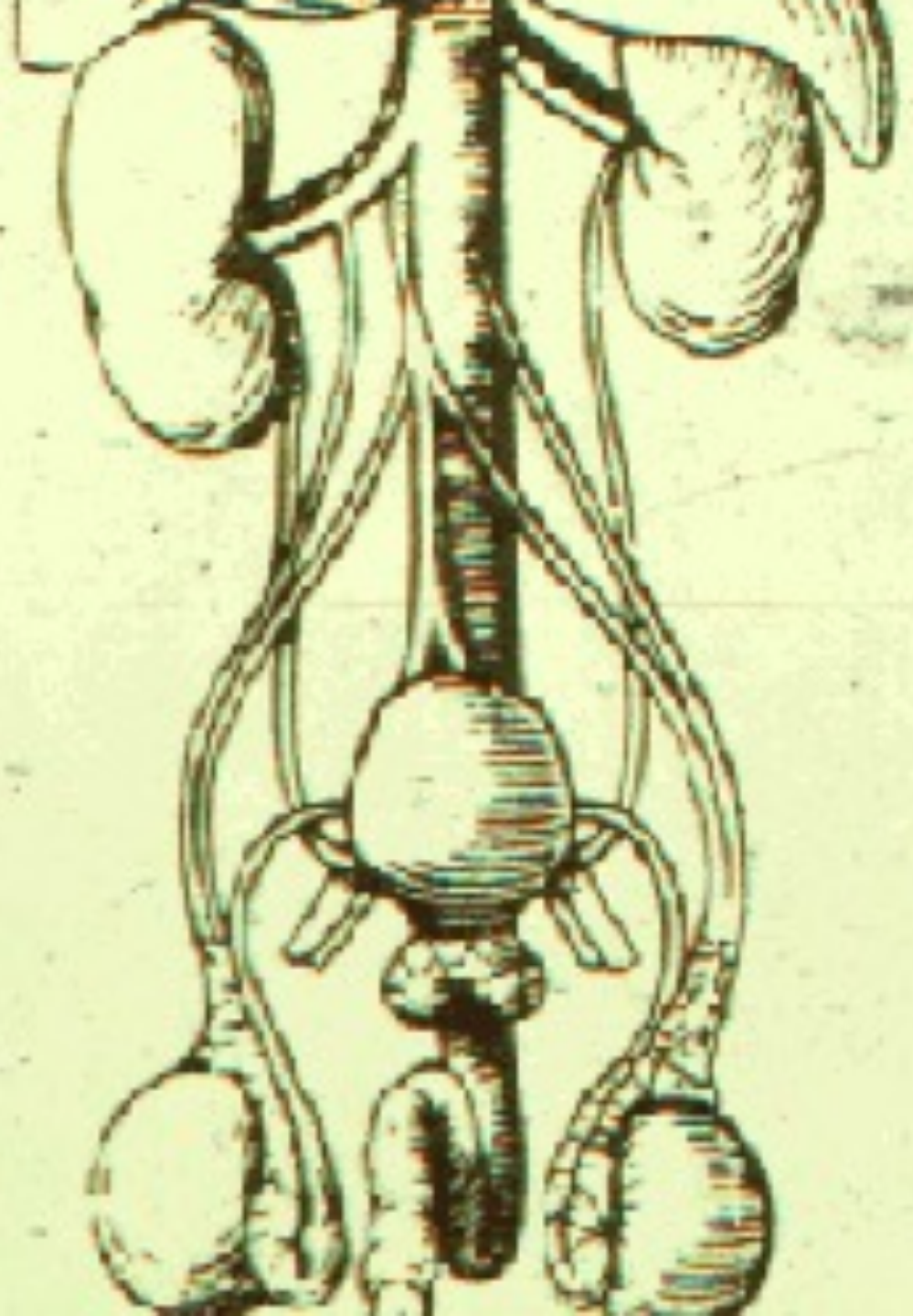
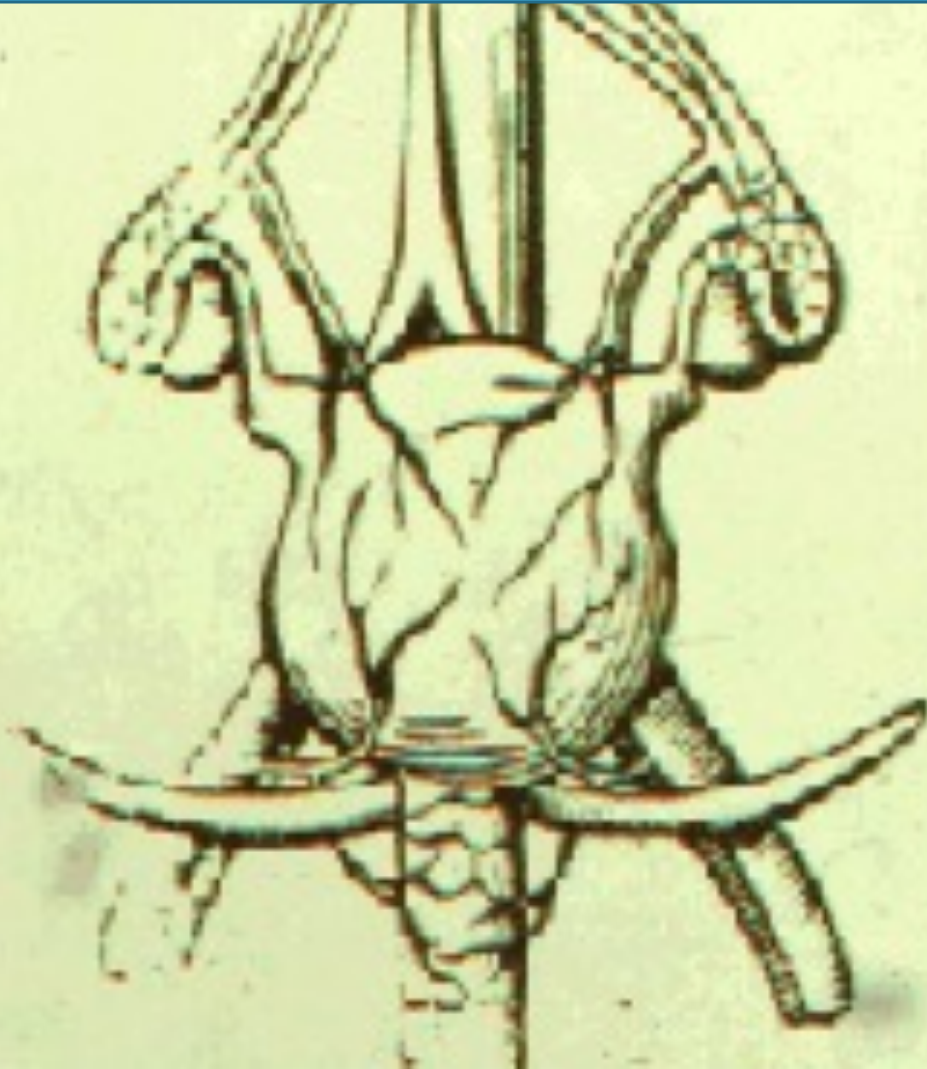
Weak

Inferior

Disabled



Andreas Vesalius,
16th century



the **WANDERING WOMB**

Hyster(ia)

=

WOMB

Plato

"In the middle of the flanks of women lies the womb, a female viscus, closely resembling an animal; for it is moved of itself hither and thither in the flanks, also upwards in a direct line to below the cartilage of the thorax, and also obliquely to the right or to the left, either to the liver or the spleen, and it likewise is subject to prolapsus downwards, and in a word, it is altogether erratic. It delights also in fragrant smells, and advances towards them; and it has an aversion to fetid smells, and flees from them; and, on the whole, the womb is like an animal within an animal."

The background of the slide is a traditional East Asian painting, possibly a scroll, depicting a figure in a dark robe with a red sash. The painting is partially obscured by a large, solid blue rectangular overlay that contains the word 'THEORY' in white, bold, sans-serif capital letters. The overall aesthetic is historical and scholarly.

THEORY

- Excluded from political power
- Subject to husbands and fathers
- Control of sexuality by men (seclusion)

PRACTICE



Livia Drusilla

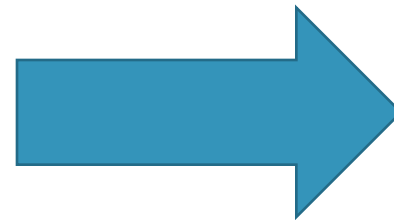
(58 B.C.E. – 29 C.E.)

- Wife of Augustus
- Advisor
- Petitioner
- Wealthy



Patriarchy...

- is adaptable
- depends on context
- changes over time



Women's
History as
story of
continuity
and change.

Women and Gender in the Ancient World

